

# 325 325e 325es

Bavarian Motor Works, Munich, Germany



© 1985 BMW AG, Munich, West Germany  
Not to be reproduced wholly or in part  
without written permission of BMW AG, Munich  
8 5530820  
2/85 V8  
Printed in West Germany 1985





**Advanced and innovative technology: the determining factor in the development of outstanding automobiles and the cornerstone of BMW's quest for automotive excellence.**

While physics may teach that opposite poles attract, an appreciation for the BMW and its driver presents an eloquent counterpoint favoring the affinity of like traits.

At BMW, excellence is not just the result of a painstaking production process—it is designed into every BMW.

BMW's singular desire for automotive excellence and the production of exciting alternatives in the up-scale market dates back to its classic entries of the 1930's.

Even then, BMW's commitment was to the manufacture of automobiles noted for extraordinary agility, remarkable handling and efficient design. The philosophy of exceptional performance achieved through balance, not excess, has been at the heart of BMW's rise to its position, today, as the pre-eminent manufacturer of exclusive performance automobiles for the driving enthusiast.

BMW stands proud of its reputation for understated luxury and engineering excellence.

It is a pride that runs deep—to the very heart of BMW. And at the heart of BMW, there is motor sport. BMW has always been deeply involved in motor sport: this dedication has stamped a distinct and lasting mark on all BMW automobiles.

The BMW name is synonymous with performance both on the highway and the racetrack.

Drivers of production BMWs have enjoyed the exhilarating benefits of intensive motor sport competition for over 50 years. No less than 31 World and European championships, 115 national championships and a large number of individual victories in all kinds of racing categories and contests bear witness to BMW's extraordinary success in motor racing.

The same story applies to BMW motorcycles with innumerable wins scored by BMW riders—166 national championships and no less than 37 World and European championships clearly prove the successful tradition of BMW motorcycle racing. While BMW's past accomplishments represent an extraordinary statement of technological advancement—that, to BMW, is still history. BMW works in the future—to deliver the finest automobiles possible—today.

BMW's present automotive activities offer a fascinating profile of the application of technology on the threshold of tomorrow.

Just consider the first computer-controlled engine introduced by BMW in 1979, and the spectacular success of the BMW Formula 1 power unit which, only in its second year of racing, helped Nelson Piquet win the 1983 Grand Prix World Championship. The high performance automobiles

and motorcycles bearing the BMW symbol enjoy an extraordinary reputation for excellence—an excellence defined by BMW's unique character and uncompromising quality.

So it is that the joy of owning a BMW evidences itself immediately whether behind the wheel or the handlebars. This joy represents the product of an organizational spirit characterized by a common desire for achievement, singular contribution by outstanding individuals and a universal love of competition.

It is the fruit born of dedication, spirit, and the search for the answers to tomorrow's needs.

This philosophy has produced exceptional results. During the last 15 years, BMW has become the most successful manufacturer of exclusive automobiles. Achieving this kind of success demands more than a first-class range of models or extraordinary talent. It calls for consumers who appreciate automobiles tailor-made to satisfy the true driving enthusiast.

And that consumer has come to be distinguished as the BMW owner. Just like the automobiles and motorcycles built by BMW, BMW drivers are distinguished by their individual nature. Precise and performance-oriented, BMW drivers enjoy competition, see life from a critical perspective and are both self-motivated and self-confident.

As a special breed distinguished by their individualism, it is not surprising that their car is a BMW. At least in this relationship of man and machine, it is obvious that each is made for the other.

**BMW 3 Series sports sedans—exhilarating performance and value in a form to fit your needs.**

In-line 6-cylinder performance—the heart of the 3 Series.

All 3 Series sedans benefit from the robust BMW 2.7 liter 6-cylinder Eta engine. This sophisticated and refined example of BMW's legendary in-line 6-cylinder design displays velvet-smooth running characteristics and exceptional responsiveness. With a light alloy head for rapid heat dissipation, overhead cam design, cross-flow manifold and hemispherical combustion chambers, the Eta engine stands as a paradigm of performance engine design.

The optimized gasoline engine.

BMW turned to its successful racing program for the latest in computer and micro-electronics technology to produce design refinements unachievable through mechanical excellence alone.

The 2.7 liter in-line 6-cylinder Eta engine is a vital part of BMW's answer to the problem that confronts all car makers today: how can an engine achieve both efficiency and performance without compromising either? With the Eta engine, such compromises are no longer necessary. The primary efficiency disadvantages of the conventional gasoline engine are most pronounced in so-called "low-load" operation, as in city traffic and during cruising at moderate speeds—namely, the conditions under which most everyday driving is normally done.

In these situations, the engine's throttle is only slightly open, offering considerable resistance as the engine "inhales" air. In order to reduce these throttling losses, BMW engineers increase the engine's breathing efficiency in the load and rpm ranges most frequently called upon in day-to-day driving. At the same time, they decrease the final drive ratio, thereby lowering the Eta engine's rotational speeds (rpm). An idle control is added to reduce idling speeds.

To retain the Eta's acceleration ability despite the lower rpm level, engine torque (or power) at low and medium engine speeds is increased. This is achieved mainly through advanced acoustical tuning of the engine's intake system and special attention to valve timing.

Also, combustion efficiency is greatly improved by optimizing the combustion chamber design and increasing the compression ratio. Finally, all these modifications and refinements are enhanced by the addition of Digital Motor Electronics (DME)—the most advanced system of electronic ignition controls available. The economy-minded DME system serves to complement the Eta principle, thanks to its precise and versatile control of ignition timing. The net effect of all these changes

is a significant improvement in the operation efficiency of the gasoline engine without compromising the performance, quiet operation and easy starting that are the clear advantages of gasoline engines.

Total performance at BMW means far more than just a powerful engine.

The BMW 3 Series features the essential benefits of the double-pivot MacPherson strut front suspension of the large BMWs by way of a special single-pivot suspension with a small positive steering offset and reduced leverage for distributing forces. The result is superior handling, greater stability in corners and excellent directional stability. The BMW 3 Series also features an improved semi-trailing arm rear suspension swept back by 15°. This suspension design further enhances driving comfort with 100% brake-dive compensation and a reduction of the squatting effect when accelerating.

The 325es offers a special performance suspension package. This package includes gas shocks at all four wheels, progressive rate springs and reinforced front and rear stabilizer bars. Additionally, the 325es comes standard with a limited slip differential for superior traction. Tailored to match the new suspension geometry, the BMW's 4-wheel disc ABS anti-locking brake system is perfectly designed to enhance the already superior chassis design. The most important feature of ABS is that, while applying maximum braking, the driver can still steer the automobile to avoid obstacles or change direction.

ABS also stops the automobile from swerving on road surfaces due to varying surface conditions; for example, when the righthand wheels are running on the soft shoulder of the road or the surface is not quite dry.

In addition to the increased stopping surety of the 4-wheel disc ABS system, BMW diagonal-twin circuit brake design ensures that should one brake circuit fail to operate, one front wheel and the diagonally-opposed rear wheel will still have their full braking power.

The crucial link point between the performance automobile and the road is each tire. Mounted on distinctive light alloy wheels are 200/65 x HR14 premium quality steel-belted radial tires.

3 Series BMWs are available with a 5-speed manual transmission or 4-speed automatic transmission.



ABS anti-lock braking represents a revolutionary advancement. The driver benefits from a vehicle that stops more surely and can be steered under maximum braking. The ABS system consists of a speed sensor for each wheel and an electronic brain to process the speed data. Interacting with the associated hydraulic unit the "brain" can then control the braking force acting on each wheel (2). ABS is designed to prevent the automobile from swerving on roads with varying surface conditions; for example when the surface is not quite dry or when one set of tires is running on a soft shoulder (8,7).



In answering the need for a high-performance, high-efficiency motor, the Eta engine offers an inspired solution (3). The 2.7 liter in-line 6 cylinder Eta engine delivers a significant improvement in operating efficiency without compromising performance. This efficiency breakthrough owes its success to the thorough refinement of the 6-cylinder engine design and BMW's Digital Motor Electronics.

A unique MacPherson strut front suspension and semi-trailing arm rear suspension deliver exceptional road-holding and stability (5). Perfected on racecourses like the Nürburgring, where precision is crucial and agility and durability are more than just matters of theoretical speculation, its suspension is fully independent on all four wheels; a patented MacPherson strut axle geometry in front and semi-trailing arms and coil springs in the rear.



### An automobile built on the technology of tomorrow.

While many manufacturers address the increasing buyer desire for performance with "sports" paint and decal packages, driving enthusiasts can take heart. BMW's 3 Series offers ABS 4-wheel disc anti-lock braking, 4-wheel independent suspension, ergonomically-designed interiors and 6-cylinder performance in three distinctive and inspired sports sedans.

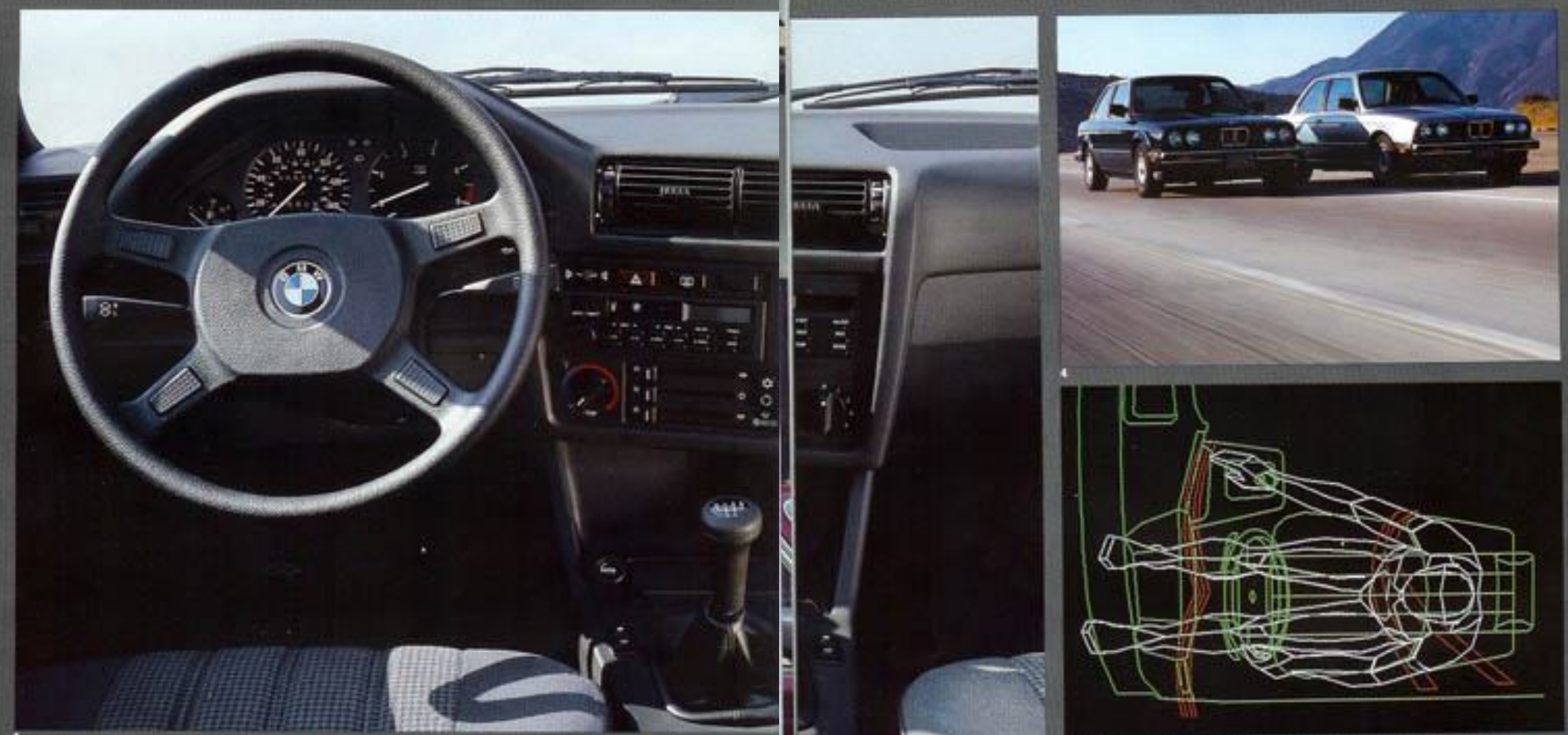
Three distinctive interpretations—each an exceptional sports sedan

BMW's 325 offers, in both a 2-door and 4-door, a complete sports sedan of exceptional value. With a fully-appointed interior, BMW's renowned quality and the nimble ABS equipped in-line 6-cylinder powered chassis, the 325 makes inspired good sense. For those who desire even greater luxury in a 4-door sports sedan, BMW proudly introduces the 325e Luxus. While an elegantly-appointed luxury automobile, the 325e Luxus retains the nimble handling and breathtaking performance that sets the 3 Series apart.

The 325es—the 2-door sports sedan that delivers everything the driving enthusiast expects from a BMW, and more. Representing the purest expression of 3 Series total performance, the 325es possesses many features exclusive to this model.

As a 3 Series owner, you can be pleased with the wisdom of your choice. BMW remains pre-eminent as the name in quality sports sedans for those with a desire for excitement and a thoughtful concern for value.





1 All cockpit controls and instruments are integrated into a total harmony of ergonomic design principles. The lines of vision, seat, steering wheel, gear-shift lever, controls and instruments are precisely placed to optimize communication between the driver, the automobile and the surroundings (1, 5, 6).



2 Air conditioning and fresh air heating systems (2) use the latest computer technology to enhance driving comfort.



3



7



8 Power window controls (7) are within easy reach. BMW's on-board electronics (8) supply the driver with meaningful information for greater control and more efficient driving.

**A BMW's interior is even more attractive after the trip is over.**

The true evaluation of an interior does not come with the compliments received upon entering, but those offered upon leaving.

BMW has integrated all cockpit controls and instruments into an optimized expression of ergonomic principles. The driver's line of vision, seat, steering wheel, gear-shift lever, controls and instruments are not arranged at random as the result of some futuristic design, but are rather placed exactly where they should be to optimize communication between the driver, the automobile and the surroundings.

The objective of a BMW's interior design is to provide perfect all-around visibility, optimum control of the 3 Series' advanced systems, and safe and reliable response to driving conditions. The 3 Series' interior design maintains the occupants' level of comfort, even over extended periods of driving, and of course, accomplishes it in a motoring environment offering every conceivable amenity.

One does not so much sit in a BMW as become a part of it.

Careful study has been made of the critical interrelation between seat location, visual position, steering wheel, pedals and controls. All functions have been assiduously planned to facilitate total, precise control at all times, under all conditions.

Recognizing the anatomical reality that no two people are made with precisely the same measurements, the 3 Series is made to adjust to the driver instead.

Resilient cloth and vinyl upholstery are standard in the 325 and 325es, while leather comes standard in the 325e Luxus. The 3 Series front bucket seats offer a firm yet accommodating design that reflects their orthopedically-inspired shape and construction. Not only do BMW bucket seats afford excellent spinal support for long trip comfort, they provide exceptional lateral support for control in hard cornering. A totally engineered performance automobile does not stop with a state-of-the-art suspension design for good handling—it provides for driver stability as well. For personalized driving comfort, 3 Series bucket seats are fully reclining, with adjustable height and headrest. It is all but impossible not to find a comfortable driving position.

Rear seats, as well, benefit from an orthopedically-inspired design with the 325e Luxus having a center fold-down arm rest. They offer a remarkable amount of knee room, due to the special contour of the rear seat backrests. The rear seat bench has been modified in accordance with the highest ergonomic standards in or-

der to provide optimum spring action and a suitable distribution of pressure over the entire seat area. Three-point seat belts are provided for the outboard positions with a lap belt in the center position.

The dashboard and center console exhibit a handsome display of ergonomically designed and positioned instruments and controls.

Power windows, power two-position sunroof, cruise control, heated outside power mirrors, 2-speed and intermittent wiper/washer, central power locking and rear window defroster only begin the list of luxury features standard in this interior (325e Luxus, 325es).

Air conditioning and heating controls afford an exceptional range and power in the selection of temperature. As well, the air flow design provides for a thorough and even distribution throughout the passenger compartment.

A radio not worth stealing but well worth owning. The BMW anti-theft radio.

BMW's AM/FM stereo cassette anti-theft radio is designed to be unusable unless in the car of its rightful owner. With this new design the radio, if disconnected, will not operate when reconnected until a five-digit security code assigned to the radio is entered.

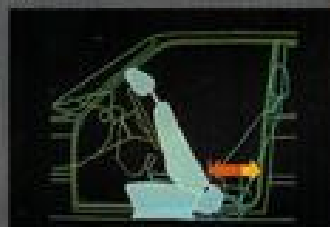
At BMW, luxury is not mere decoration—it is an element of performance design.

BMW's fifty years of experience in building and racing high-performance luxury machines has proven that the integration, not the isolation, of man and machine is the designer's goal when approaching the interior of an automobile. This approach includes the driver as an integral, functioning part of the car itself, the human part that completes the car's mechanical system. Thus, while the 3 Series features virtually every conceivable amenity one could safely require of an automobile, its interior has nevertheless actually been designed to assist the driving process, not hinder it.





Five-speed manual transmission is standard; a 4-speed automatic transmission is offered as an option (1). The front sport seats of the 325es slide forward on a track to allow passengers easy access to the back (8). The nine-function On-Board Computer II (7) displays such information as time and date, outside temperature (warning when outside conditions may be freezing), computed fuel mileage with the driving range left on the remaining fuel, and a stop watch function. An anti-theft device is part of the system as well.



To be apart from distraction and as one with the road—the 3 Series performance cockpit.

At times, the outputs of true engineering excellence display a certain irony. In the case of the BMW 3 Series, the minds of BMW have sculpted an interior control space that excludes the random distractions of the outside world and in so doing creates a performance cockpit of extraordinary sensitivity. With hands firmly planted on the wheel, there exists a natural harmony between driver and machine that can extend, even to serious enthusiasts, a sense of control well beyond any previous experience. With BMW's ergonomic testing and research, the cockpit of the 3 Series conveys a feeling of total yet effortless control. The main instruments are integrated in an instrument cluster directly in the driver's line of vision. All instruments are marked clearly and, at night, illuminated by an optically-beneficial orange light. The instrument panel, constructed in a concave manner, curves towards the driver. Thus, regardless of the position of the driver or the driver's arm length, all controls can be reached comfortably, quickly and safely. At BMW, the goal is the perfect integration of man and machine. This explains why, when you take the wheel of a BMW for the first time, you're not just sitting in a BMW; you're connected to it.

The art and science of performance engineering honed to a keen edge with state-of-the-art technology.

Thanks to recent breakthroughs in micro-circuitry and computer technology, electronics hold the promise for providing the ever-increasing refinement of control being demanded of automotive systems. And it is by leading in the exploration of electronics' potential that BMW will continue to produce automobiles that are environmentally responsible, efficient and exciting to drive. BMW offers the driving enthusiast a cockpit with "intelligent" technologies that take over many routine chores. Perhaps the most outstanding of these systems are the active Check/Control, the Service Interval Indicator, the EC Energy Control and, on the 325es and 325e Luxus, the On-Board Computer II.

The automatic way to extra safety: the active Check/Control.

The Check/Control keeps the driver informed of the operational readiness of his car. Simply by depressing a button before starting the car (when the ignition is turned on), information can be obtained on certain vital functions of the automobile—and instantly warn the driver of problems.

The first known example of a car evaluating its driver.

Another unique BMW feature is the Service Interval Indicator—a computer-driven system addressing the previously unconsidered fact that different people drive differently. With the aid of electronic sensors located around the car, the indicator monitors individual variations in driving habits—as measured by factors such as engine speed and temperature and the frequency distribution of weekly driving time—along with the distance driven.

Exact fuel consumption information, not just averages.

Unlike other indicators, the Energy Control fuel consumption indicator is engineered for precision rather than approximation. With a remarkable degree of sophistication and accuracy, it provides the driver with an excellent indication of how much fuel the car is consuming at a given moment. This kind of information assists a driver in refining his driving style, thus providing the opportunity to increase fuel efficiency and improve overall economy.

The BMW On-Board Computer II allows the driver to concentrate on more important matters—such as driving.

BMW's On-Board Computer II does its work unobtrusively and reliably. It is so cleverly integrated that it in no way disturbs the functional and ergonomic perfection of the BMW cockpit.

At the same time, the On-Board Computer II is a further example of how BMW applies "intelligent" electronics to encourage energy-conscious driving.



### Luxury as a way of life; performance as a way of living—the BMW 325e Luxus.

In the 325e Luxus, BMW has taken painstaking care to offer the highest level of creature comfort in a breathtakingly agile sports sedan. For those with a practical need for space, a personal desire for luxury and a love for the exhilaration of real performance, BMW has specifically created the 325e Luxus. Beyond the technological tour-de-force that the 325e chassis and drivetrain represent there stands an ex-

traordinary luxury-appointed automobile that proudly displays the level of quality that has established BMW craftsmanship as the benchmark of excellence. Leather upholstery, anti-theft AM/FM stereo cassette/radio, power sunroof, power windows, cruise control, full carpeting, central locking—the list goes on. BMW's 325e Luxus rightfully takes a position among the finest luxury sedans.



BMW's 325e Luxus displays an exhaustive dedication to fulfilling the most demanding need for luxury in a sports sedan. Most amazingly, it accomplishes this high level of comfort while delivering exceptional stability and agility along with the serious power and performance expected only in the finest sports cars. The eager and aggressive 325e Luxus presents the opportunity to enjoy the exhilaration of a true per-

formance automobile while driving a sedan that reflects an equal concern for good taste and value. The 325e Luxus puts the joy of driving squarely in your hands. This sports sedan delivers a celebration of all that makes driving a pleasure.

**Quality is the sum total of doing all things well.**

Outstanding quality is born of an unswerving dedication to excellence in design, materials, testing and production. Producing automobiles of such consistent quality requires total commitment and exhaustive vigilance. In a world of compromise and expediency, true quality, to exist, demands not only a tenacious dedication to high standards but the ability to meet challenges with inspired solutions.

Luxury that goes deeper than a plush carpet.

Most cars—and surprisingly enough some of the most costly—call for a compromise between comfort and performance. Yet, BMW engineers somehow always manage, with great aplomb, to combine these two “mutually exclusive” characteristics—without compromise and yet, without conflict.

In the BMW 3 Series, every need of the driver—and passenger—has been anticipated.

Both the driver and passenger are coddled and comforted in anatomically-shaped bucket seats. Air conditioning, AM/FM anti-theft stereo cassette/radio, electric sunroof and dual electric sideview mirrors are all standard equipment. There is even a central locking system that now includes a dead bolt which locks all four doors, the trunk lid and the gas door with the turn of a single key. In short, it is an automobile that has been engineered to be luxurious to drive, not merely comfortable to sit in.

Quality obvious at a glance becomes more impressive on closer scrutiny.

On first inspection, you will be struck by the unusually high quality of fit and finish.

To achieve this remarkable degree of perfection, the BMW 3 Series goes through what, to most manufacturers, might seem an excessively arduous process of preparation. Every step of priming, cavity sealing, undercoating, painting, sanding and repainting is hand-inspected and repeated until the car meets the approval of the BMW inspection team. This team of individuals is as notorious for their dedication to the principles of luxury as they are to the principles of high performance. BMW's exceptional performance and handling are attributable not only to the fine-tuned chassis design but also to BMW's high standard of production accuracy that is constantly verified by most stringent tests and examinations. On every BMW, for example, the chassis geometry must be correctly aligned down to the last tenth of a millimeter. To guarantee accuracy, all chassis elements are checked not once, but numerous times.

To ensure a supreme standard of quality, our sophisticated testing machinery checks the exterior dimensions of our cars as well as those of interior structure and the quality of key components. Here again, BMW uses the most modern testing procedures and equipment. To maintain this high standard of accuracy, BMW enlists highly skilled, quality-conscious engineers and the most modern production machinery. BMW constantly monitors this machinery based on a comprehensive, computerized system designed specifically for BMW.

The most comforting part of the BMW interior may be the knowledge of its safety-conscious design.

In BMW's highly specialized body-testing facilities—with the help of extremely sophisticated testing equipment—the entire body structure, as well as all structural details, are examined during rollovers, front/rear, front/side, front/front and transverse collisions for their stress resistance and reactions.

From this testing came a highly effective passenger cell occupant-protection design which offers occupant-impact protection by surrounding the passenger compartment with a rigid steel cage. The areas fore and aft of the passenger cell are, conversely, designed to bend.

The front and rear sections of a BMW offer twofold purpose in the event of an accident: first, it crumples at predetermined points to absorb impact energy smoothly and efficiently.

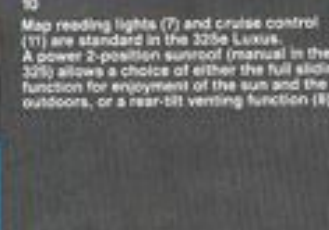
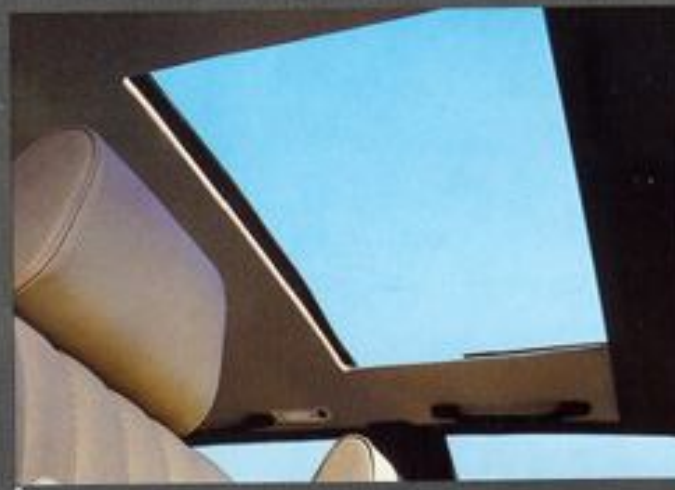
Second, it systematically passes on these impact forces from one part of the car to another. An important component is the extra-rigid wheel arch supporting the front suspension. These wheel supports located in and around the wheel arch absorb substantial forces and pass them on efficiently to the front roof pillars and longitudinal supports without affecting the passenger cell essential to occupant safety.

For 1986, BMW will have a trunk-level rear stoplight incorporated into the 3 Series design and will offer 5 mph impact-resistant bumpers that exceed required minimums as standard equipment.

A warranty engineered to perform like a BMW.

Of course, a car built with such attentiveness to detail and quality deserves to be accompanied by a warranty of equal caliber.

Every new BMW is protected by a warranty that represents one of the finest owner protection packages—BMW's three-year/36,000-mile limited warranty covers defects in materials and workmanship with six-year limited warranty against rust perforation.



The roomy interior offers a welcome stay to driver and passengers alike. To afford back-seat occupants maximum knee room, the front seatbacks have been made concave. There is no need to sit sideways or any other way but comfortably. Rear seats offer an orthopedically-inspired design and, in the 325e Luxus, a fold-down center arm rest with a storage compartment (4). Three-point seat belts are provided for the outboard positions with a lap belt in the center position (5).

Map reading lights (7) and cruise control (11) are standard in the 325e Luxus. A power 2-position sunroof (manual in the 325i) allows a choice of either the full sliding function for enjoyment of the sun and the outdoors, or a rear-tilt venting function (8).



**A car so meticulously crafted deserves to be meticulously maintained. BMW takes its responsibility for providing quality service as seriously as it takes its commitment to building quality automobiles.**

The authorized BMW dealer is the heart of an extensive and concerted effort by the BMW organization. The thrust of that effort is to provide BMW owners with the peace of mind that comes with knowing that, wherever they go, there is a place to get the professional treatment they want, including BMW CC financing or leasing programs. An authorized BMW dealership reflects an intense level of pride in the BMW product and a total commitment to serving the needs of the BMW owner. With modern, well-equipped facilities, skilled personnel and an extensive parts inventory, the authorized BMW dealer is prepared to provide the full service and support a BMW owner deserves. BMW service technicians undergo rigorous training. New technicians will have worked on many BMWs before they are entrusted with the responsibility of a customer repair. BMW's determination to employ innovative technology is supported by an equal determination to maintain the high

level of technician competence in servicing those innovative systems. Thus, technicians maintain their level of proficiency by attending annual updates and taking advantage of a broad offering of technical courses available at BMW training centers. Quality of repair is a function not only of technician skill but quality of replacement parts as well. Genuine BMW replacement parts guarantee that a BMW once repaired remains faithful to the BMW commitment to driving excellence. It is true that to do a job well requires having the right tools. BMW technicians, in addition to having the skills and genuine BMW replacement parts, have tools specifically designed for BMWs and available only through authorized dealers. BMW service and BMW parts are available at more than 400 authorized dealers coast to coast in the United States—and in more than 100 countries around the world.

## Technical Data BMW 325/325e/325es—1986

### Dimensions and Weights

Two-door or four door, rigid steel safety cell passenger compartment, crush zones front and rear, integrated center roof reinforcements. Length 176.8"; width 64.6"; height (unloaded) 54.3". Wheelbase 101.2"; track front 55.4"; rear 55.7". Turning circle 34.4 ft. Door cutouts 47.5". Front bucket seats 20.1" wide each, rear bench seat 52.4". Width at shoulder height front 52.9", rear 52.4".

### Engine Power Transmission Performance

Six-cylinder four-stroke in-line water-cooled engine longitudinally mounted and inclined, light alloy cylinder head with crossflow design, hemispherical swirl-action combustion chambers, overhead camshaft with four bearings, inclined overhead valves in V-arrangement, touch-and-go drive, vibration-dampened crankshaft with 7 main bearings and 12 counterbalance weights, pressure oil circulation, full-flow oil filter with regulation valve, viscous speed-related fan drive with thermostat control circuit.

Bosch L-Jetronic fuel injection, 3-way catalyst with Lambda sensor, Digital Motor Electronics (Motronic).

Capacity	164.3 cu.in.
Stroke	3.19"
Bore	3.31"
Power	173hp (SAE net) at 4250 rpm
Torque	170 ft.-lb. (SAE) at 3250 rpm
Compression ratio	9.0:1

### Chassis and Brakes

Front-wheel suspension: independent on MacPherson struts with helical springs and axle-shaped lower arm, coil springs, anti-roll bar. Rear-wheel suspension: independent 15° semi-trailing arms with progressive rate coil springs, telescopic shock absorbers and anti-roll bar. Collapsible safety steering column with power assisted rack-and-pinion steering, overall ratio 21.4:1. BMW-style light alloy rims: 6J x 14. Steel-belted radial tires: 205/65 HR 14.

### Equipment

Exterior: energy-absorbing 5-mph bumpers with rubber moldings mounted on hydraulic shock absorbers, integrated air dam. Dual headlights with halogen beams and light-on-override, backup lights, high-mounted third brake light. Tinted glass all around with dark green border on top of windshield. Dual electrically-adjustable outside rearview mirrors with warning on convex glass, manual dual-position sunroof, cavity seal, undercoating.

Heating and Ventilation: air conditioning, fresh air heating system with 4-speed blower. Defroster for windshield and side windows. Fresh air intake through adjustable grille side and center with controls for each front seat occupant, illuminated heating controls, flow-through ventilation.

Interior: easily readable and clearly mounted instruments with infotary adjustable orange illumination arranged in a semi-circle around the driver. Speedometer with odometer and trip recorder, fuel and temperature gauges, tachometer with Energy Control, digital clock. Service Interval Indicator. Warning lights for fuel reserve, handbrake, brake fluid, brake lining wear, alternator, oil pressure. "Fasten Seat Belts," Occupant Sensor Service, Active Check/Control to monitor brake lights, low beam, windshield washer fluid level, oil and coolant levels, taillights, license plate illumination. Stalk control for automatic windshield wiper/washer with single-wipe, intermittent and 2-speed operation. Power-controlled windows, AM/FM stereo cassette anti-theft radio with automatic

### Optional Equipment

325: 4-speed automatic transmission, metallic paint.  
325e: 4-speed automatic transmission, limited slip differential, metallic paint.

Trunk capacity approx. 14.3 cu. ft. Fuel capacity approx. 14.5 U.S. gal. including 2.0 gal. reserve.

	325es	325/325e
GVMR	3737	3781
GVWR front	1764	1828
GVWR rear	2017	2050
Service load	870	870

Breakerless ignition system controlled by DME. Three-phase alternator—80 amp., 1120 watt. Battery 12 volt, 66 amp. hrs. Hydraulically actuated single-plate dry clutch, torsional dampers and automatic adjustment. Optional 4-speed transmission with torque converter and lock-up clutch.

Gearbox:

a. Manual transmission 5-speed overdrive  
1.83 R 2.20 D 1.42 IV 1.0 V 0.81 R 3.46  
b. Automatic transmission (optional equipment)  
1.246 R 1.48 D 1.0 IV 0.75 R 2.09  
Final drive ratio 2.93: 1 (manual transmission)

Two-piece drive shaft with flexibly mounted central bearing and 2 universal joints; rear-wheel drive through double universal joint shafts with maintenance-free constant velocity joints. Acceleration: 0-50 mph in 6.9 seconds, manual transmission. Unleaded gasoline: 91 RON (87 AKI).

Dual-diagonal circuit-power braking system with hydraulic booster and rear axle brake pressure regulating device. Anti-lock braking system with dash-mounted warning light.

Front: ventilated floating-caliper disc brakes with automatic adjustment, diameter 10.2".  
Rear: disc brakes with vacuum booster, diameter 10.2"

Mechanically-operated handbrake.

Rear-mounted antenna, 4 speakers and later control. Front: four-spoke telescoping steering wheel with safety inset pad and 4 horn contacts. Reclining bucket seats with adjustable headrests, longitudinal seat adjustment on roller bearings. Armrests on doors with integrated handgrip. 3-point automatic seat belts.

Rear: bench seat with 3-point automatic seat belts. 2-point seat belt in center, hand grips above windows.

Fully carpeted interior and rear shelf, cloth or leatherette upholstery, illuminated and lockable glove compartment, additional storage in door pockets. Cigarette lighter, ashtray in instrument panel, center ashtray in rear, anti-glass rearview mirror. Safety door locks, central locking system. Interior light with contacts on all doors, time delay courtesy light. Carpeted trunk with light, and tool kit in lid.

325e: cruise control, electric dual-position sunroof, On-board Computer II, all leather upholstery and leather-wrapped steering wheel, rear seat headrests and center armrest, rear reading light.

325es: color-keyed front air dam and rear deck spoiler, front spoiler with integrated fog lights, limited slip differential, cruise control, sports seats in vinyl or Country Cloth, electric dual-position sunroof, sports suspension (gas pressure shocks, progressive rate springs, reinforced front and rear stabilizer bar), M-Technic Steering Wheel.

325es: 4-speed automatic transmission, leather upholstery, metallic paint.

GVWR = gross vehicle weight rating  
GVWR = gross axle weight rating

Sole U.S. Importer:  
BMW of North America, Inc.  
Montvale, N.J. 07645

BMW reserves the right to make changes in specifications, standard and optional equipment without prior notice. Further information can be obtained from your BMW dealer.